

Fork joints

SPECIFICATION

Version in Steel

Types

Type **B**: Snap on spring pin
 Type **KL**: Pin with KL-shaft safety
 Type **SL**: Pin with SL-shaft safety
 (only for $d_1 = 4 \dots 16$)

Steel

- Tensile strength class 5
- zinc plated, blue passivated

Shaft safety

- spring sheet metal
- hardened and tempered
- zinc plated, blue passivated

Version in Aluminium

Types

- Type **KL**: Pin with side mount ring
- Type **SL**: Pin with safety clip

Aluminium **AL**

anodized, black

KL- / SL-shaft safety

- Spring steel
- hardened and tempered
- zinc plated, blue passivated

Version in Stainless Steel

Type

- Type **A**: Pin with retaining ring

Stainless Steel AISI 303 **NI**
 uncoated

Safety circlip DIN 471
 Stainless Steel
 German Material No. 1.4122

INFORMATION

Fork joints GN 751 consist of a fork head according DIN 71752 and a pin with KL-shaft (Type KL and SL) a pin with snap-on spring (Type B). Both versions can be dismantled without tools and monitor. Size $d_1 = 12$ is supplied with a fine thread M12x1.5 according to DIN. In practice, however, M12x1.25 is preferred. Standard DIN 71752 does not foresee size $d_1 = 20$.

ON REQUEST

Fork heads in accordance with DIN 71752 (see page 1152) with $d_1 = 25, 30, 35, 42$ and 50 (only Steel Version).

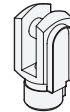


TECHNICAL INFORMATION

- ISO-Fundamental Tolerances (see page A21)
- Stainless Steel characteristics (see page A26)

Types of fork joint shafts

Snap-on spring



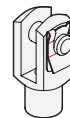
The snap-on spring pin is easily mounted and dismantled. It is therefore particularly suitable for applications where the articulated connection needs to be loosened often.

KL-shaft safety

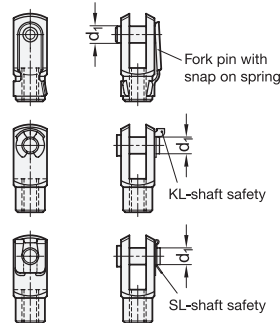
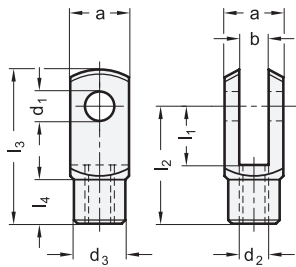


The pin with side mount ring can be fitted and dismantled without tools, i. e. by hand.

SL-shaft safety



The pin with safety clip requires a tool for dismantling (e.g. a screw driver). It is therefore better secured.



* Complete with type index of Fork joints

B KL SL

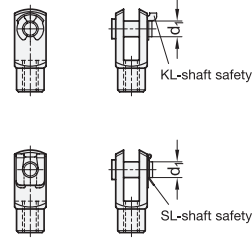
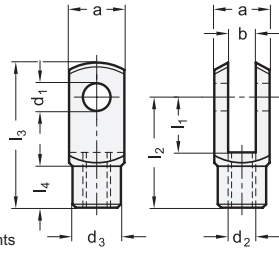
GN 751-ST

Description	d1 H9/h11	l1	d2	a	b	d3	l2	l3	l4	⚖
GN 751-4-8-M4-*	4	8	M 4	8	4	8	16	21	6	7
GN 751-4-16-M4-*	4	16	M 4	8	4	8	24	29	6	11
GN 751-5-10-M5L-*	5	10	M 5L	10	5	9	20	26	7.5	14
GN 751-5-10-M5-*	5	10	M 5	10	5	9	20	26	7.5	13
GN 751-5-20-M5L-*	5	20	M 5L	10	5	9	30	36	7.5	18
GN 751-5-20-M5-*	5	20	M 5	10	5	9	30	36	7.5	15
GN 751-6-12-M6L-*	6	12	M 6L	12	6	10	24	31	9	20
GN 751-6-12-M6-*	6	12	M 6	12	6	10	24	31	9	20
GN 751-6-24-M6L-*	6	24	M 6L	12	6	10	36	43	9	30
GN 751-6-24-M6-*	6	24	M 6	12	6	10	36	43	9	27
GN 751-8-16-M8L-*	8	16**	M 8L	16	8	14	32	42	12	50
GN 751-8-16-M8F-*	8	16**	M 8F = M8x1	16	8	14	32	42	12	49
GN 751-8-16-M8-*	8	16**	M 8	16	8	14	32	42	12	48
GN 751-8-32-M8L-*	8	32	M 8L	16	8	14	48	58	12	65
GN 751-8-32-M8F-*	8	32	M 8F = M8x1	16	8	14	48	58	12	66
GN 751-8-32-M8-*	8	32	M 8	16	8	14	48	58	12	64
GN 751-10-20-M10L-*	10	20	M 10L	20	10	18	40	52	15	90
GN 751-10-20-M10F-*	10	20	M 10F = M10x1.25	20	10	18	40	52	15	90
GN 751-10-20-M10-*	10	20	M 10	20	10	18	40	52	15	93
GN 751-10-40-M10L-*	10	40	M 10L	20	10	18	60	72	15	120
GN 751-10-40-M10F-*	10	40	M 10F = M10x1.25	20	10	18	60	72	15	120
GN 751-10-40-M10-*	10	40	M 10	20	10	18	60	72	15	125
GN 751-12-24-M12L-*	12	24	M 12L	24	12	20	48	62	18	148
GN 751-12-24-M12F-*	12	24	M 12F = M12x1.25	24	12	20	48	62	18	151
GN 751-12-24-M12-*	12	24	M 12	24	12	20	48	62	18	140
GN 751-12-48-M12L-*	12	48	M 12L	24	12	20	72	86	18	206
GN 751-12-48-M12F-*	12	48	M 12F = M12x1.25	24	12	20	72	86	18	204
GN 751-12-48-M12-*	12	48	M 12	24	12	20	72	86	18	200
GN 751-14-28-M14L-*	14	28	M 14L	28	14	24	56	72	22.5	221
GN 751-14-28-M14F-*	14	28	M 14F = M14x1.5	28	14	24	56	72	22.5	218
GN 751-14-28-M14-*	14	28	M 14	28	14	24	56	72	22.5	219
GN 751-14-56-M14L-*	14	56	M 14L	28	14	24	85	101	22.5	302
GN 751-14-56-M14F-*	14	56	M 14F = M14x1.5	28	14	24	85	101	22.5	298
GN 751-14-56-M14-*	14	56	M 14	28	14	24	85	101	22.5	300
GN 751-16-32-M16L-*	16	32	M 16L	32	16	26	64	83	24	340
GN 751-16-32-M16F-*	16	32	M 16F = M16x1.5	32	16	26	64	83	24	340
GN 751-16-32-M16-*	16	32	M 16	32	16	26	64	83	24	339
GN 751-16-64-M16L-*	16	64	M 16L	32	16	26	96	115	24	467
GN 751-16-64-M16F-*	16	64	M 16F = M16x1.5	32	16	26	96	115	24	471
GN 751-16-64-M16-*	16	64	M 16	32	16	26	96	115	24	467
GN 751-20-40-M20L-*	20** ***	40	M 20L	40	20	34	80	105	30	675
GN 751-20-40-M20-*	20** ***	40	M 20	40	20	34	80	105	30	660

** in type B not available from stock

*** not available in type SL



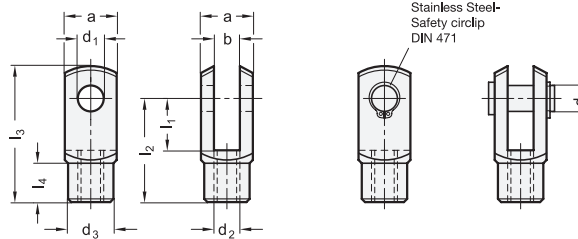


* Complete with type index of Fork joints
 KL SL

GN 751-AL

Description	d1 H9/h11	l1	d2	a	b	d3	l2	l3	l4	△
GN 751-4-8-M4-*-AL	4	8	M 4	8	4	8	16	21	6	6
GN 751-4-16-M4-*-AL	4	16*	M 4	8	4	8	24	29	6	11
GN 751-5-10-M5-*-AL	5	10	M 5	10	5	9	20	26	7.5	10
GN 751-5-20-M5-*-AL	5	20*	M 5	10	5	9	30	36	7.5	18
GN 751-6-12-M6-*-AL	6	12	M 6	12	6	10	24	31	9	20
GN 751-6-24-M6-*-AL	6	24*	M 6	12	6	10	36	43	9	28
GN 751-8-16-M8-*-AL	8	16	M 8	16	8	14	32	42	12	48
GN 751-8-32-M8-*-AL	8	32*	M 8	16	8	14	48	58	12	62
GN 751-10-20-M10-*-AL	10	20	M 10	20	10	18	40	52	15	92
GN 751-10-40-M10-*-AL	10	40*	M 10	20	10	18	60	72	15	123
GN 751-12-24-M12-*-AL	12	24	M 12	24	12	20	48	62	18	144
GN 751-12-48-M12-*-AL	12	48*	M 12	24	12	20	72	86	18	197
GN 751-14-28-M14-*-AL	14	28	M 14	28	14	24	56	72	22.5	220
GN 751-14-56-M14-*-AL	14	56*	M 14	28	14	24	85	101	22.5	298
GN 751-16-32-M16-*-AL	16	32	M 16	32	16	26	64	83	24	335
GN 751-16-64-M16-*-AL	16	64*	M 16	32	16	26	96	115	24	460

* not available from stock, requires a minimum order quantity



GN 751-NI

STAINLESS STEEL

Description	d1 H9/h11	l1	d2	a	b	d3	l2	l3	l4	△
GN 751-4-8-M4-A-NI	4	8	M 4	8	4	8	16	21	6	6
GN 751-4-16-M4-A-NI	4	16	M 4	8	4	8	24	29	6	8
GN 751-5-10-M5-A-NI	5	10	M 5	10	5	9	20	26	7.5	10
GN 751-5-20-M5-A-NI	5	20	M 5	10	5	9	30	36	7.5	19
GN 751-6-12-M6-A-NI	6	12	M 6	12	6	10	24	31	9	20
GN 751-6-24-M6-A-NI	6	24	M 6	12	6	10	36	43	9	25
GN 751-8-16-M8-A-NI	8	16	M 8	16	8	14	32	42	12	46
GN 751-8-32-M8-A-NI	8	32	M 8	16	8	14	48	58	12	60
GN 751-10-20-M10-A-NI	10	20	M 10	20	10	18	40	52	15	85
GN 751-10-40-M10-A-NI	10	40	M 10	20	10	18	60	72	15	121
GN 751-12-24-M12-A-NI	12	24	M 12	24	12	20	48	62	18	145
GN 751-12-48-M12-A-NI	12	48	M 12	24	12	20	72	86	18	200
GN 751-14-28-M14-A-NI	14	28	M 14	28	14	24	56	72	22.5	220
GN 751-14-56-M14-A-NI	14	56	M 14	28	14	24	85	101	22.5	280
GN 751-16-32-M16-A-NI	16	32	M 16	32	16	26	64	83	24	328
GN 751-16-64-M16-A-NI	16	64	M 16	32	16	26	96	115	24	400
GN 751-20-40-M20-A-NI	20	40	M 20	40	20	34	80	105	30	680